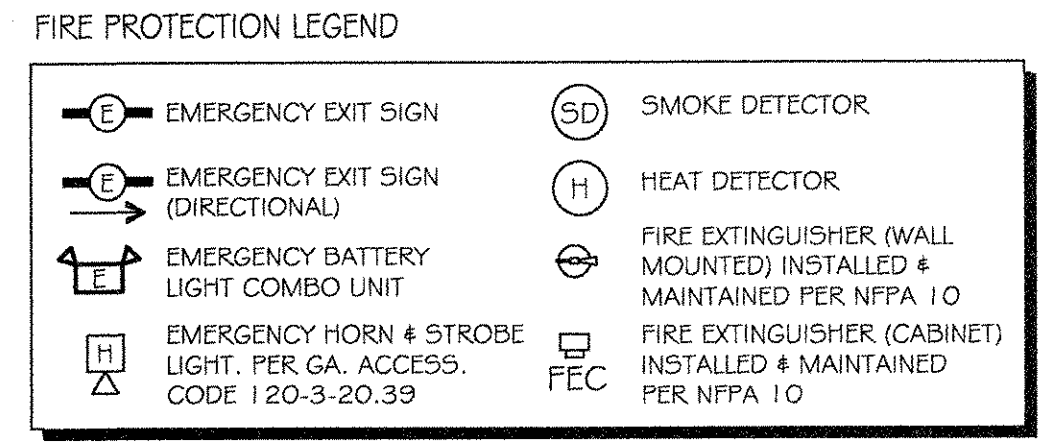
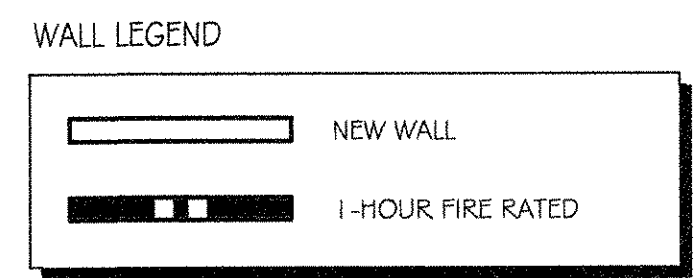


REVISIONS

NO.	DESCRIPTION

NOTE:
SEE MEP DRAWINGS FOR
ADDITIONAL EMERGENCY LIGHTING,
POWER & FIRE PROTECTION LAYOUT
AND SYSTEMS

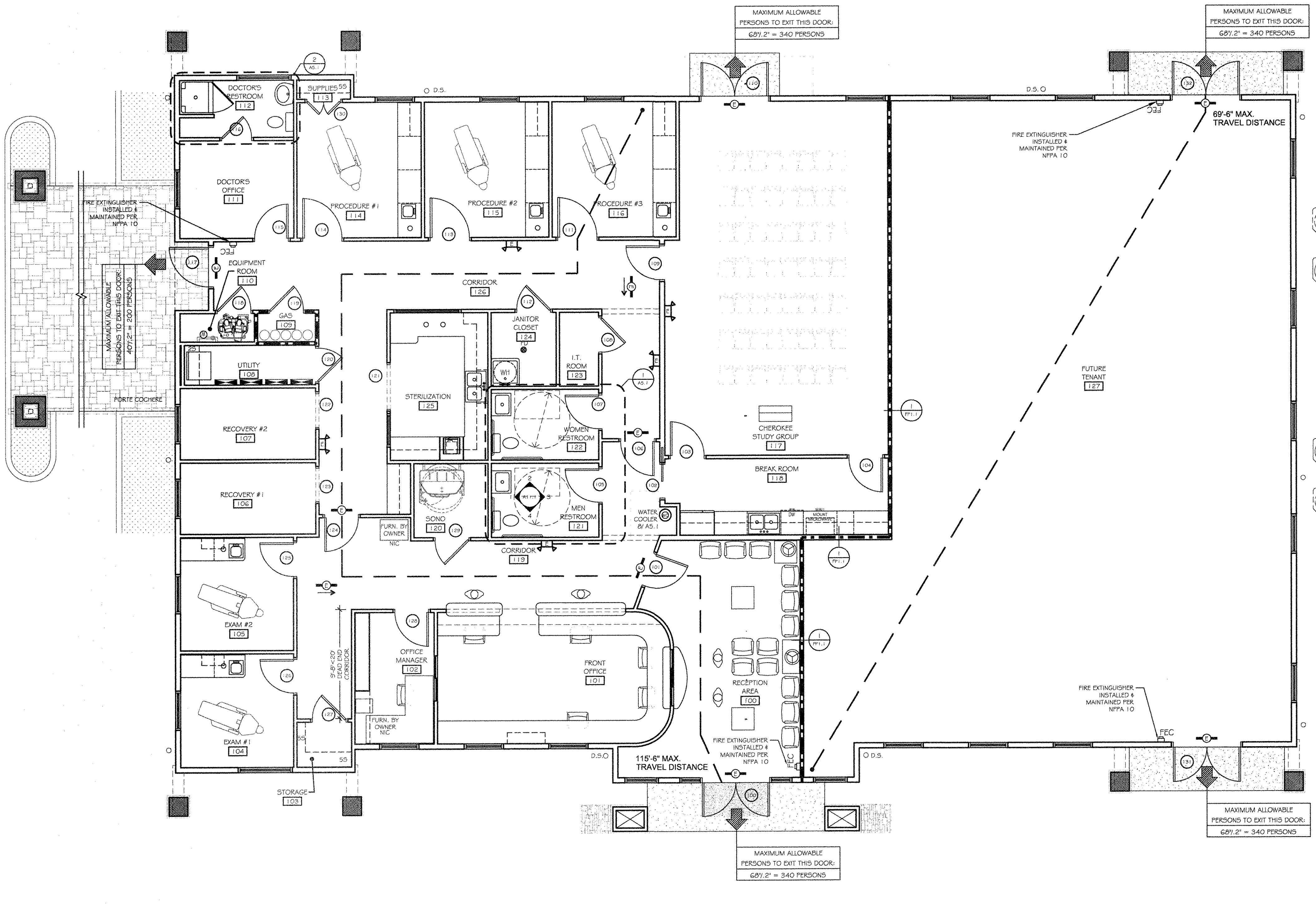


- * APPLICABLE CODES**
- INTERNATIONAL BUILDING CODE 2006 w/ LATEST GEORGIA AMENDMENTS
 - INTERNATIONAL FIRE CODE 2006
 - NATIONAL FIRE PROTECTION ASSOCIATION "LIFE SAFETY CODE" 101-2000
 - GEORGIA ACCESSIBILITY CODE (GAC 120-3-20) 1997
 - INTERNATIONAL PLUMBING CODE 2006
 - INTERNATIONAL MECHANICAL CODE 2006
 - INTERNATIONAL FUEL GAS CODE 2006
 - NATIONAL ELECTRIC CODE 2008 w/ LATEST AMENDMENTS
 - INTERNATIONAL ENERGY CONSERVATION CODE 2009 WITH LATEST ADMDMENTS
- * ALL GEORGIA 2011 ADMENDMENTS SHALL APPLY TO THE CODES ABOVE

PROJECT DATA

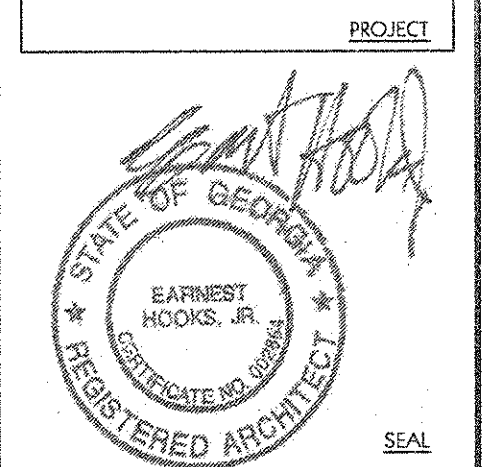
BUILDING PLAN REVIEW:
NEW ONE-STORY MEDICAL BUILDING

	ALLOWED / REQUIRED	BUILDING PROPERTIES
1. OCCUPANCY CLASSIFICATION: (IBC) (NFA 101 - CHAPTER 38 NEW BUSINESS)		BUSINESS GROUP B NEW BUSINESS
2. CONSTRUCTION TYPE: (IBC) A=PROTECTED B=UNPROTECTED A/B (NFA 101)		TYPE V-B UNSPRINKLERED
3. AREA & HEIGHT LIMITATIONS: (IBC TABLE 503)	2 STORY - 9,000 SF. / FL.	1st FLOOR = 5,912 SF. (OUTSIDE OF FRAMING)
4. FIRE SUPPRESSION / ALARM: SUPPRESSION:	UNSPRINKLERED	UNSPRINKLERED
5. FIRE PROTECTION REQUIREMENTS: (IBC TABLE 601)		
STRUCTURAL FRAME:		
COLUMNS & GIRDERS, BEAMS, TRUSSES	0 HOUR	0 HOUR
BEARING WALLS:		
EXTERIOR	0 HOUR	0 HOUR
INTERIOR	0 HOUR	0 HOUR
NONBEARING WALLS & PARTITIONS:		(SEE IBC TABLE 602)
EXTERIOR		
NONBEARING WALLS & PARTITIONS:		
INTERIOR	0 HOUR	0 HOUR
FLOOR CONSTRUCTION: INCLUDING SUPPORTING BEAMS & JOISTS	0 HOUR	0 HOUR
ROOF CONSTRUCTION: INCLUDING SUPPORTING BEAMS & JOISTS	0 HOUR	0 HOUR
(IBC TABLE 602)		
FIRE-RESISTANT RATING FOR EXTERIOR WALLS:		
X < 5	1 HOUR	N/A
5 ≤ X < 10	1 HOUR	N/A
10 ≤ X < 30	0 HOUR	0 HOUR
X ≥ 30	0 HOUR	0 HOUR
VERTICAL SHAFTS: (IBC 707.4 & NFA 7.1.3.2)		
INCIDENTAL USE: (IBC TABLE 508.2)		
TENANT SEPARATION: (IBC TABLE 508.3.3)		
6. OCCUPANT LOAD: (IBC TABLE 1004.1.1 & NFA TABLE 7.3.1.2)	BUSINESS = (100 SF. / OCC.)	37 OCCUPANTS-TENANT SPACE 23 OCCUPANTS-FUTURE SPACE 60 OCCUPANTS TOTAL
7. EXIT CAPACITY: (IBC TABLE 1005.1 & NFA TABLE 7.3.3.1)		
2" PER OCCUPANT (LEVEL COMPONENTS): (FLOORS)	7.4' (32" MINIMUM @ DOORS)	68"
3" PER OCCUPANT (STAIRWAYS):	11.1" (36" MINIMUM)	N/A
8. COMMON PATH, DEAD-END, & TRAVEL DISTANCE LIMITS: (IBC 1014.3, 1017.3, 1016.1 & NFA TABLE A.7.6.1)		
COMMON PATH LIMIT:	75 FT. (UNSPRINKLERED)	0 FT.
DEAD-END LIMIT:	20 FT. (UNSPRINKLERED)	9 FT. 8 IN.
TRAVEL DISTANCE LIMIT:	200 FT. (UNSPRINKLERED)	115 FT. 6 IN. MAXIMUM (10 OUTSIDE OF BUILDING)



1 FIRST FLOOR PLAN
1/4" = 1'-0"

QUAD A
4508 HOLLY SPRINGS PKWY
CANTON, GEORGIA 30115
11-1502



FEBRUARY 28, 2011
CONSTRUCTION SET
RELEASED FOR CONSTRUCTION

LIFE SAFETY PLAN

DRAWING TITLE

© COPYRIGHT 2011
JEFFERSON BROWNE, INC.
THIS DOCUMENT AS AN
INSTRUMENT OF SERVICE
REMAINS THE PROPERTY OF
JEFFERSON BROWNE, INC. AND
NO PART THEREOF MAY BE
REPRODUCED IN ANY FORM
WITHOUT WRITTEN PERMISSION
FROM JEFFERSON BROWNE, INC.

Drawn By: J.B. OW
Checked By: J.B.H
PROJECT # 11-1502 SHEET 03 of 39